

● “ENKOSYSTEM” BIOLOGICAL WASTEWATER TREATMENT PLANTS

It is an entirely biological household wastewater treatment system with little demand for energy. In comparison with other solutions, it requires a small building area, and the entire system is extremely energy efficient.

Purified water can be economically reused or infiltrated into the ground. The ENKOSYSTEM consists of two tanks equipped with a system of technological processes, including mechanical, chemical and biological wastewater treatment. The system is equipped with an electronic control system.

A unique biological treatment system using selected strains of plants determines the uniqueness and effectiveness of ENKOSYSTEM technological solution.

Processes of organic matter decomposition in the whole system are extremely efficient, which also eliminates the need for pumping out and transportation of sediments.



● MODULAR TOWER COMPOSTING PLANTS KWM 500

It is a unique silo-chamber composting system.

The plant can be used for composting of many different types of organic waste from various sources. The composting takes place in a continuous system. It means that every day a new layer of fresh material is added and every day (or every few days) a layer of compost is removed.

Unique design with special heat-insulating wall panels allows the system to produce high temperature (up to 80 deg C) with no external energy supply. Such temperature ensures compost hygienisation.

It is a dry process (no leaching). Aeration is done in a passive manner, which ensures very low odour level. Modular design allows us to tailor the composting plant size to individual customer needs. The plant operates automatically with very low operating costs.



COMPANY INFORMATION

The ENKO company was established in 1991 and has been dynamically developing since then.

Main objective of our company is the responding to our customers' needs.

We design, manufacture, assemble and service the equipment.

We also carry out commercial activities.

The main area of our production is environmental protection equipment, especially devices for wastewater treatment plants, as well as complete wastewater treatment plants.

We also manufacture different types of equipment for food processing, including cryogenic tunnels for fast food freezing, automatic self-cleaning filters for liquid food, stationary and mobile systems for milk collection and many others.

With our qualified and experienced engineering and technical staff we carry out most difficult tasks.

We have our own research and development teams, both for development of mechanical structures and for automation, computing and control.

ENKO is the largest Polish manufacturer of electromagnetic flow meters and the largest Polish manufacturer of the STZ wastewater disposal stations.

Our equipment is exported to European Union countries and beyond, including Syria, South Korea, Belarus, Ukraine and Cuba.

Beside the equipment production, our company undertakes different complex tasks including: concepts, design and construction of facilities based on our equipment.

Our specialists are willing to provide you advice and assistance in the selection of type and parameters required for your devices.

WE ARE LOOKING FORWARD TO DOING BUSINESS WITH YOU



ENKO-POMIAR Sp. z o.o. 44-109 Gliwice, ul.Metalowców 6

www.enkopomiar.pl biuro@enkopomiar.pl

tel.: +48 32 232 01 52, 32 233 09 32 fax: 32 235 62 37



PRODUCTS

for environment protection industry



● ELECTROMAGNETIC FLOW METERS MPP

Used for liquid flow measurement. They can be used, for example, to measure drinking water, wastewater and sewage sludge, milk, juices, beer, wine, acids, alkalis and many other liquids. The flow meter consists of a sensor (mounted on a pipeline) and converter. We produce sensors with diameters ranging from 3 mm to 1000 mm. The sensors may be equipped with different types of lining and measuring electrodes. They are designed to work in a wide range of temperatures. The converter can be mounted on a sensor (compact version) or installed separately. MPP-type flow meters are characterized by their high accuracy and reliability. The sensors have no moving parts or any other elements that could reduce the piping section, and therefore they do not cause pressure drops. They can cooperate with a computer and other devices. They allow liquid metering, direct connection of printers, etc.



● WASTEWATER DISPOSAL STATIONS STZ

Measurement of volume and other selected parameters of wastewater delivered.

Only authorized suppliers are allowed to discharge wastewater.

Possibility of installation in wastewater treatment plant buildings or in special containers.

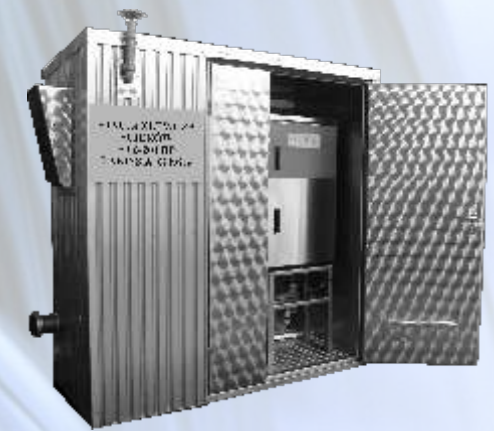
They can be equipped with screening sieves and dehydrating presses.

Protection of a wastewater treatment plant against destruction of activated sludge.

Cooperation with a computer and determining supply quotas.

Sampling (for laboratory examination).

No protection zone required.



● SEWER FUNCTION MACHINES MEASURING SYSTEM OSA

The measuring system is equipped with an electromagnetic flow meter, a set of connectors and mounting screws, control system and receipt printer. Data on a receipt printout can be adjusted to individual client requirements. The system is powered by 24 V from the car installation. It allows you to control the amount of wastewater collected by drivers. The system is designed for self installation by the customer. ENKO provides all the elements required for installation of the measurement system, along with a detailed installation and operating manual.



● INTEGRATED SYSTEMS FOR SAND AND SCREENINGS REMOVAL ZSP

ZSP-type integrated system for mechanical wastewater treatment combines the functions of a screening sieve / grate, sand trap and degreaser. As a result, the mechanical wastewater treatment process takes place in a relatively small floor area in one compact unit. We use different types of filtering devices to separate screenings from wastewater (grates and various types of sieves). The devices can be equipped with an aeration system. They are made of high quality acid-proof steel. The equipment is characterized by its high separation efficiency and low operating costs. It is controlled automatically. The ZSP system is individually designed in compliance with the object conditions and tailored to individual customer needs. Thanks to attractive price and relatively low operating costs the ZSP is increasingly displacing traditional wastewater pre-treatment devices.



● SCREENS

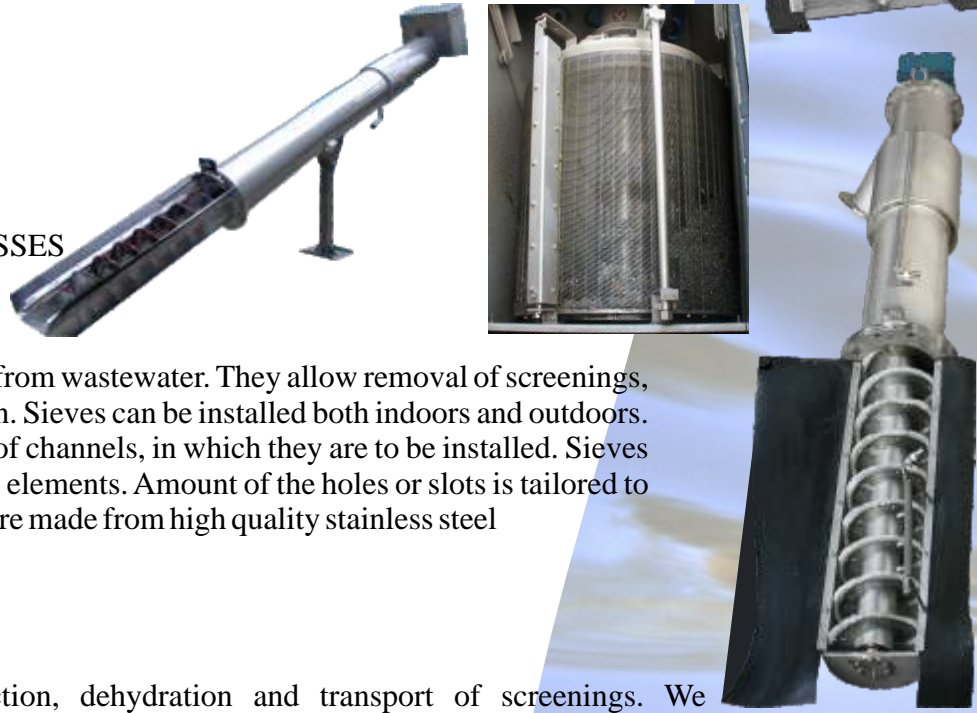
We manufacture different types of screens. These include:
KSE STEP SCREENS
KHS HOOK SCREENS
KHP PANEL SCREENS
KKE PLATFORM SCREENS
KRE MANUAL SCREENS



Screens are designed to separate solids from domestic and industrial sewage in the first (very important) step of wastewater purification. The structure of our screens guarantees their reliability, high efficiency purification and high throughput. Screen dimensions depend on the dimensions of channels, in which they are to be installed. Size of the holes or slots is tailored to individual customer needs. The screens are made of high quality acid-proof steel or plastic. The screens operate automatically.

● SCREENING SIEVES

Basic types of sieves include:
SBW DRUM SIEVES
SBK CHANNEL SIEVES
SWP SIEVES WITH SCREENING PRESSES



Sieves are designed to separate screenings from wastewater. They allow removal of screenings, as well as their dehydration and compaction. Sieves can be installed both indoors and outdoors. Sieve sizes are adjusted to the dimensions of channels, in which they are to be installed. Sieves are equipped with various types of filtering elements. Amount of the holes or slots is tailored to individual customer requirements. Sieves are made from high quality stainless steel

● SCREENING PRESSES

Screening presses allow volume reduction, dehydration and transport of screenings. We manufacture two types of presses: ram presses and expellers. Compacted screenings can be transported either vertically or horizontally to containers or bags. Compact, proven structure and high quality materials of the presses guarantee long and failure-free operation. Screening presses can be equipped with a screenings washing system.

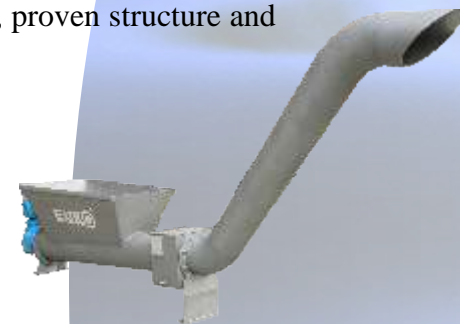
PRE RAM PRESS
PSW EXPELLER

● RIBBON FEEDERS PSE

Ribbon feeders are designed for transporting bulk materials and pulp. In wastewater treatment plants they are used, for example, to transport dehydrated sludge, screenings, lime and other materials. Ribbon feeders have very wide application in many industries. They can be used, for example, to transport grain, ash, cement, sand, aggregates and other materials.

We manufacture shaft feeders and non-shaft feeders. Ribbons used for transportation are manufactured in accordance with individual customer requirements. We produce feeders in a wide range of diameters, lengths, angles of inclination, drive powers, etc.

Materials used in feeder production are selected in each case depending on the characteristics of transported material, working environment and specific customer requirements.



● SAND SEPARATORS

Sand separators consist of a sand trap and ribbon feeder. As a result of decrease in speed of wastewater flow from a sewage system to the separator, the sand settles at the bottom of the working chamber. An oblique ribbon feeder collects sand from the bottom of the working chamber and transports it to a container or other equipment, for example a sand washer. During this process simultaneous gravity drainage of the transported sand takes place. The separators are manufactured from high quality acid-proof steel.

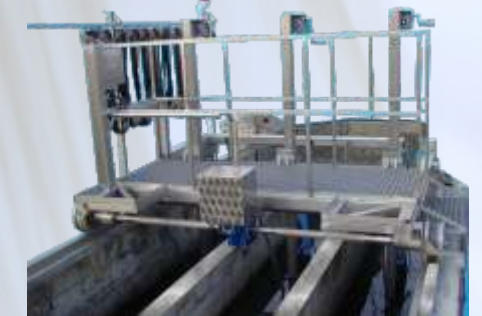


● VORTEX SAND SEPARATORS PWE

Vortex sand separators are designed for separating sand and solids (heavier than wastewater). Vortex sand separators with their small overall dimensions provide relatively high efficiency of sand separation. They are characterized by their high efficiency and low energy consumption. They are made from high quality acid-proof steel. PWE vortex sand separators can be installed in heated rooms of wastewater treatment plants or under non-heated shelters, as well as in open terrain. They can operate in automatic or manual mode.

● SAND SCRAPERS ZGP

Sand scraper is a part of a horizontal sand separator. It is used to remove settled mineral pulp from the bottom of the separator and to scrape any substances floating on the separator chamber surface. Sand pulp can be removed from the bottom of the chamber with a pump or pushed with special scraper blades into a chamber placed at the end of the sand separator. The scraper moves along the sand separator on wheels. Sand separator can be installed on a sand trap platform. The sand trap works in manual and automatic cycle.



● SAND WASHERS PPE

Sand washers are used to separate organic pollutants from sand and other particles. Organic pollutants generated in the washing process are addressed to further purification steps. After the washing process sand can be delivered directly to landfills. Content of organic components in washed substance is less than 3%. The device is made of high quality acid-proof steel. It is characterized by its high efficiency and compact design. Sand washers can be also adapted to work in open terrain in winter conditions.



● PENSTOCKS AND VALVES

They are used in wastewater treatment plants, pumping stations, drainage facilities, hydro facilities, sewerage systems, fire protection systems, etc. Closing or adjusting can be done manually or mechanically. Only high quality stainless steel is used for manufacturing of our products. Seals are made from high quality elastomers, properties of which are adjusted each time to the environment of their operation.

Many years of design experience and high quality workmanship guarantee their leakproofness and long-life reliable operation.

We manufacture a wide range of such devices.

These are: **KNIFE GATE VALVES AND DIFFERENT TYPES OF PENSTOCKS: CHANNEL, WALL, CHAMBER, OVERFLOW, OVERFLOW-ADJUSTABLE, PIPELINE AND REVERSE PENSTOCKS, STOPLOGS** and other.

